

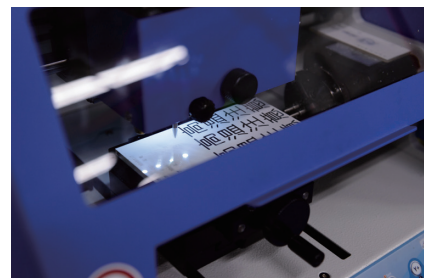
SUZUKI INDUSTRIAL MODELLING COMPANY

Product and technology information

Production of many models in small quantities
3D scanning and cad data conversion.

Company Introduction

We will help the product development in the long history and new technology.



Company Information

Industry Manufacturing

Corporate name SUZUKI INDUSTRIAL MODELLING COMPANY

Representative Tomohiko Suzuki

Head office Japan

Main phone number +81-45-541-1821

Web address <http://suzuki-kikai.com/>

Established date 01/04/1962

Main Clients Various development manufacturers



matching@idec.or.jp

Please contact IDEC if you are interested in a negotiation with this company.
IDEC is here to assist you in business matching.