

Gitoh Systems Co., Ltd.

Product and technology information

Technical information

Our main business is technical development of image processing technology, image analysis technology, and signal measurement technology.

There is object recognition tracking processing technology. This technology recognizes objects from images taken with a camera and tracks the objects in real time.

In recent years, we have focused on facial image technologies such as face recognition, face authentication, and line-of-sight recognition as application of object recognition tracking processing technology.

This is a field that has been attracting attention recently due to the rapid advancement of AI technology. However, improvement of engine performance using AI technology is not an all-purpose solution. It is necessary to send the image to the engine in the optimal image state in the scene to be processed. In such a case, our accumulated image and signal processing technology over 20 years will be effective.

There are also uncompressed video storage technologies based on the knowledge gained through the development of video processing technologies. (Japanese patent 6534089)

Using these technologies, we conduct business related to R & D and customization development of image processing systems.

Main business information

R & D and contract development related to image processing and signal processing

Main product information

1. Face recognition system FaceDRAW

This is the product we are currently focusing on most. Face recognition, individual identification, age and gender attribute determination, and emotion determination. Multiple person support, input supports both video and still images. In addition to being provided as an application, it can also be incorporated into your system. The platform is Windows, Linux, iOS, Android, and other embedded platforms may be supported.

2. Object detection system ObDetector

Based on AI object recognition, legacy image processing technology is used to understand the surrounding environment and improve detection accuracy.

3. Gaze position tracking system EyeTrackerII

This is the image processing technology that we have been working on since the oldest. Originally developed to recognize the driver's condition in a car, it is possible to perform eye detection and eye tracking without being affected by the rapidly changing lighting environment.

The most recent application example is a communication tool for nursing care that uses gaze.

4. Image processing system development

We will solve customer's problems with our image processing and signal processing technology, which will help to simplify and improve the efficiency of our customers' work.

Company Introduction

Our company stands on the management philosophy "We will be discovering creativity from the unknown and contributing to creating a new trend in society." We are thinking that it will be helping social development, discovering quickly technology and ideas that have not been found right now and creating trends that people around the world did not think about. For a long time, we have explored its creativity in the field of image processing and signal measurement technology. From now on, we believe that there is great unknown power in this field.

We continue our corporate activities, with we believe that if we will discover the technology and show it to the world, the world develops greatly.

Others (Comments)

[Company strength]

Our company's strength is our expertise in image processing technologies. Our reputation for developing image processing algorithms has earned us requests from many companies to solve complex, intricate problems. We have supplied software solutions to these problems, winning high praise from our clients. We do not introduce standard systems; instead, we develop new purpose-built systems, utilizing the special characteristics of the proprietary systems we have developed and maintain.

[Representative's message]

Despite being a small IT company, our company focuses on research and development work centered on image recognition and image processing. Unlike 20 years ago when I started research in the image processing field, excellent open source libraries were also available, making it easier to use image processing. Still, there are many research elements to solve the problem, and there are more business projects in large companies than in small and medium enterprises. Through this corporate guide, many companies in Japan and overseas will learn about our image processing and image recognition technology, and will actively engage in proposals for joint research as well as contract development.

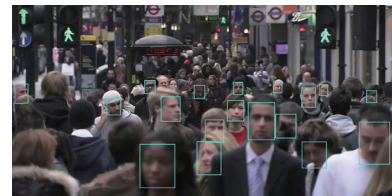
[Business description]

Our company currently operates in three business domains: (1) a network and IT business, (2) a content business, involving website production and management and various design projects, and (3) a training business, involving corporate training and personal instruction.

Of these three domains, our main focus at the present time is (1) the network and IT business, which consists of the following core segments: (a) contract development of image processing and image recognition systems, (b) contract development of the Face recognition system (c) contract development of the EyeTracker, a system that tracks eye-movement, (d) sales of our GSVR series of 4K-compatible uncompressed-video recorders and contract development of related systems, and (e) contract development of business operations systems.



Gaze position tracking system "EyeTracker"



Face recognition system FaceDRAW

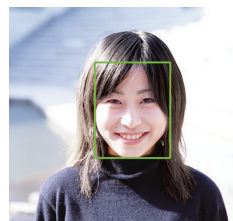


Image of Walkthru Face recognition



Object detection system ObDetector ex) The recognition system of license plate number of a car traveling on a road

Company Information

Industry IT system development

Corporate name Gitoh Systems Co., Ltd.

Representative CEO Kinya Iwamoto

Capital 5,000,000JPY

Number of Employees 5

Person In Charge Kinya Iwamoto

Head office Yokokan-dai2 Bld201,1-12-7,Minamiyoshidacho, Minami-ku, Yokohama-shi, Kanagawa, 232-0012, Japan

Main phone number +81-45-250-0963

Web address <https://www.gitoh.jp>

Established date 2003/07/07

Main Clients YoshikawaKogyo Co., Ltd.

SECURE, INC.

SHIRADO CHEMICAL WORKS,

Ltd. Asahi Advertising, Inc.



matching@idec.or.jp

Please contact IDEC if you are interested in a negotiation with this company. IDEC is here to assist you in business matching.