

## History

1st October 1996

The Tsurumi Hall

The Yokohama Industrial Institute

The Yokohama Kanazawa Industrial Development Center

The Yokohama Small and Medium Business Promotion Corporation

Above four foundations were consolidated to form

The Yokohama Industrial Development Corporation

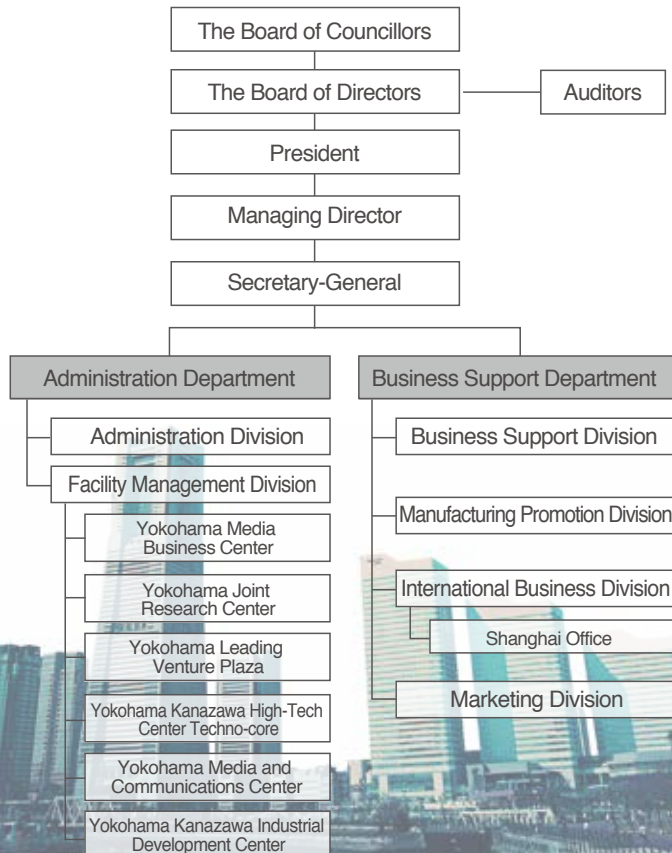
1st April 2004

Approved and appointed as the Central Support Organization of Yokohama Small and Medium Business Support Center

1st April 2012

Became "Public Interest Incorporated Foundation", Yokohama Industrial Development Corporation

## Organisational Chart



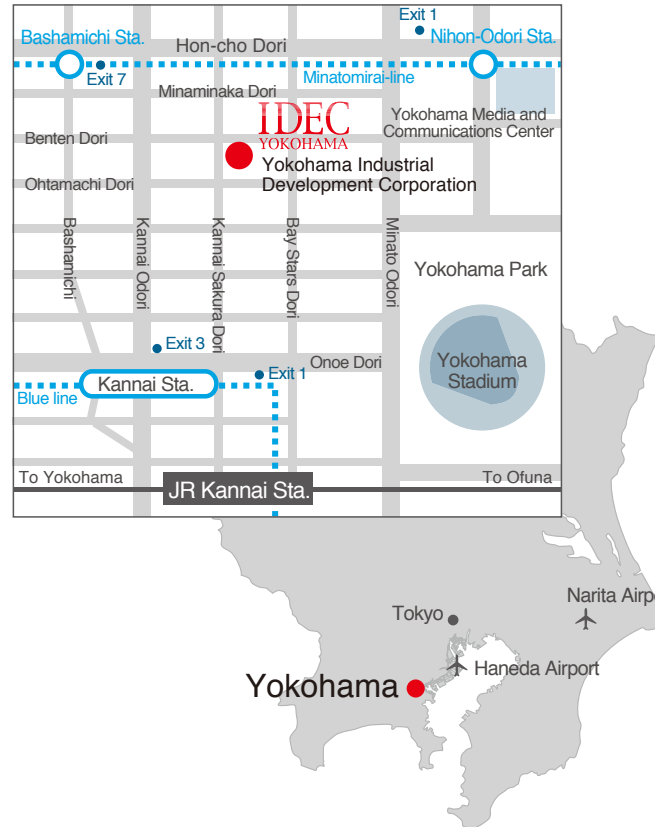
## Transport Access

### By Train

- JR "Kannai" station, North Exit
- Yokohama City Subway "Kannai" station, Exit 1
- Minatomirai Line "Bashamichi" station, Exit 7
- "Nihon-Odori" station, Exit 1

### By Car

- 5 min from the "Yokohama-koen Ramp" of the Metropolitan Expressway (please use public parking spaces)



**Yokohama Industrial Development Corporation**  
 公益財団法人 横浜企業経営支援財団

7F, Yokohama Media Business Center  
 2-23 Ohta-machi, Naka-ku Yokohama  
 231-0011 JAPAN

Tel. +81 (0)45-225-3700 (switchboard)  
 Fax. +81 (0)45-225-3737

[www.idec.or.jp](http://www.idec.or.jp)

**IDEC**  
 YOKOHAMA

ENGLISH

[www.idec.or.jp](http://www.idec.or.jp)

# IDEC YOKOHAMA

## Yokohama Industrial Development Corporation

IDEC supports small and medium-sized Yokohama enterprises in stabilising and strengthening their business base, offers solutions for managerial issues, promotes the launch of businesses and the development of overseas business, all with the objective of contributing to the vitality of Yokohama's economy.



# IDEC supports small and medium-sized business in Yokohama, Japan.

## Management Consulting / Business Consulting

We offer an individual consultations with a wide range of specialists:

- Consultations related to management issues such as the start-up/launch of businesses, laws, labor and IT (internet) usage
- Consultations related to technical issues such as mechanical processing, materials, production management, environment and energy saving
- Consultations related to overseas businesses, etc.



## Seminars

We hold various seminars to provide solutions for business challenges:

- Courses to learn how to use IT to improve business management, and the knowledge and approaches needed to launch new businesses
- Courses to learn the basics of trade-related business as well as seminars on the latest overseas investment situations
- The introduction of cutting edge research in areas such as the environment, energy, aviation, space, medical engineering, welfare and basic technologies
- Themed seminars to promote product plans and business plans through company-to-company collaborations



## Meetings to support Overseas Business Development / Negotiation Meetings

In order to support Yokohama companies opening new channels in overseas markets and making direct investments overseas, we have put in place assistance to find business partners and appear at trade shows held overseas.

We hold seminars to provide the most up-to-date economic and industrial information relating to the countries/regions of overseas partner businesses, and matchmaking events such as negotiation meetings with overseas companies, in collaboration with economic and financial institutions based overseas. In addition, we have a branch office in Shanghai, China, and contracted support desks in Bangkok, Thailand as well as Ho Chi Minh City and Hanoi in Vietnam, which can be used to collect local information and for local business activities.



**IDEC**  
YOKOHAMA

## F-SUS (Female Start-Up Support) Yokohama

We offer a shared office for female entrepreneurs, on a membership basis.

## Yokohama Business Grand Prix

Yokohama Business Grand Prix is a business plan competition set up to support entrepreneurs launching a business, and the development of new business operations for small and medium-sized enterprises. Applications from overseas are also welcome.

## Yokohama Regional Contribution Company Support

We certify companies in Yokohama who integrate CSR into their business as "Yokohama Model Regional Contribution Companies", and support their growth and development.

## Yokohama "Monozukuri" Coordination Project

By providing opportunities for companies to match up with partners, we support collaboration between domestic and overseas companies, as well as the use of intellectual property necessary for Yokohama's small and medium-sized enterprises to explore new business areas and develop new products.

## Industry Related Facilities

We support companies by providing incubation facilities as a hub for developing new technologies and new products, and for the research and development of small and medium-sized enterprises. As well, we provide loans and management of offices for the IT industry, and halls and meeting rooms.

## IDEC Shanghai Office

2108 Shanghai International Trade Centre., 2201,  
Yan An Xi Road, Shanghai, CHINA  
Tel. +86-21-6841-5777 E-mai : yokohama@idec-sh.com

We collaborate with overseas offices of  
City of Yokohama as follows:

**Frankfurt:** FBC Frankfurter Büro-Center Mainzer Landstrasse 46,  
60325 Frankfurt am Main, Germany  
Tel. +49(0)69-2423-110 E-mai : info@yokohama-city.de

**Mumbai:** Windfall 12F, Sahar Plaza Complex, Sir MV Road,  
Andheri(East), Mumbai, India  
Tel. +91-22-4613-8384 E-mail : info@yokohama-mumbai.com